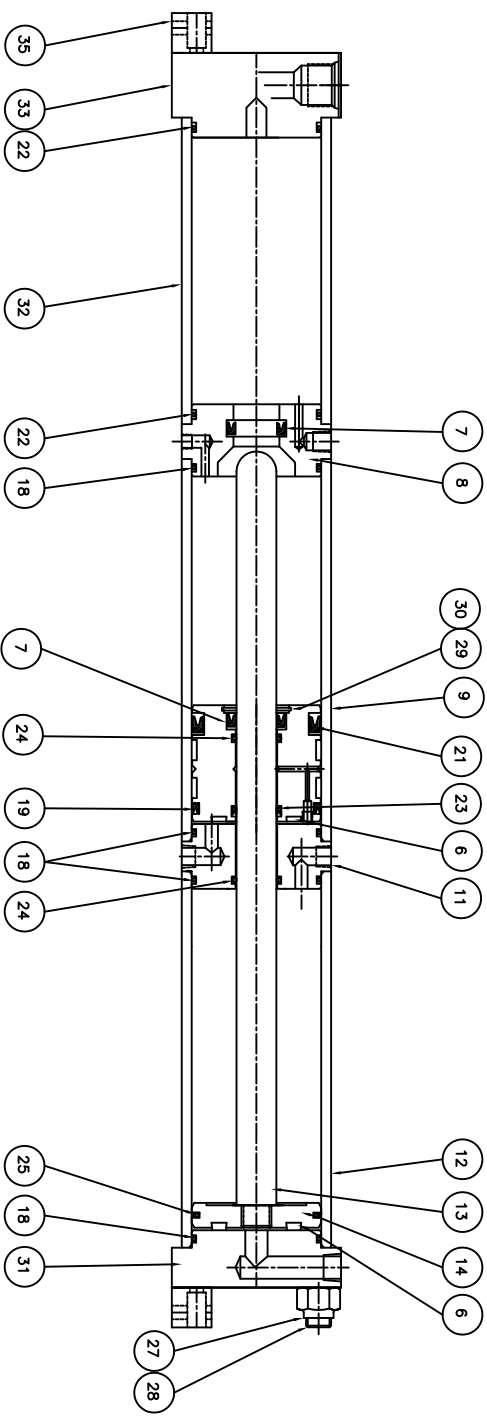


ITEM NO.	QTY	DESCRIPTION	ITEM NO.	QTY	DESCRIPTION	ITEM NO.	QTY	DESCRIPTION
1	1	E*01-a / WORK ROD	11	1	E*013 / SEPARATOR BLOCK	21	2	"O-RING" PISTON SEAL
2	1	E*003 / ROD BEARING CARTRIDGE	12	1	E*14-a** / H/P SECTION TUBE	22	3	"O-RING" #568-a**-90
3	1	E*004 / RECTANGULAR WORK HEAD	13	1	E*15-a**/ H.P. ROD	23	1	"BLUE" U-CUP ROD SEAL
4	1	E*005-a / WORK PISTON	14	1	E*16 / HIGH PRESSURE PISTON	24	2	"O-RING" #NBR-***
5	1	E*005-a / WORK SECTION TUBE	15	1	ROD WIPER	25	1	THE PISTON SEAL W/ O-RING
6	3	BP-O4 / PISTON BUMPER	16	1	"O-RING" #568-032	26	1	E*059 / CAP
7	2	"BLUE" U-CUP ROD SEAL	17	1	ROD U-CUP	27	8	HEX LOCK NUT, GRADE 8
8	1	E*010 / VALVE BLOCK	18	7	"O-RING" #568-234-70	28	4	E*060-a**/WORK THE RODS
9	1	E*011-a* / RESERVOIR SECTION TUBE	19	2	"BLUE" U-CUP PISTON SEAL	29	1	MCMASTER-CARR SHIM #****
10	1	E*012 / RESERVOIR PISTON	20	1	WEAR BAND	30	1	MCMASTER-CARR SHIM-RING #****
						31	1	
						32	4	E*061-a* / H/P EXTENSION TUBE
						33	1	E*062-a* / CAP
						34	4	E*063-a* / BOOSTER THE RODS
						35	2	E*068R / BOOSTER MOUNT BRACKET
						36	1	
						37	1	
						38	1	
						39	1	
						40	1	



HYPERCYL TONNAGE	THE ROD TORQUE FOOT POUNDS	THE ROD THREADED
1-TON	22 FT.-LBS	3/8"-24
2-TON	22 FT.-LBS	3/8"-24
4-TON	80 FT.-LBS	5/8"-18
8-TON	80 FT.-LBS	5/8"-18
10/15/20-TON	120 FT.-LBS	3/4"-16
30/40-TON	400 FT.-LBS	1.00"-14
50/60-TON	690 FT.-LBS	1.25"-12
75/90/100-TON	790 FT.-LBS	1.25"-12
200-TON	1000 FT.-LBS	1.25"-12

**HYPERCYL** Artes Engineering Company, Inc.  
 7805 N. W. 10th St., Suite 200  
 Ft. Lauderdale, FL 33309  
 Phone: (954) 575-8800 Fax: (954) 575-8844

DESCRIPTION: "HPS" SERIES HYPERCYL CYLINDER  
 DATE: 3/31/16  
 DRAWN: LWB  
 CHECKED: SCL

NOTE: ALL DIMENSIONS SHOWN CONFORM TO THE BILL OF MATERIALS.  
 NOTE: "HPS" SERIES COMPONENT CALLOUT