

## HYPERCYL<sup>®</sup> AUTO-LUBE TRAY

- ❖ Effortlessly lubricate virtually any industrial Bushing without the need for immersing, spraying, dipping or submerging
- ❖ Provides a clean and uniform lubrication to the bushing surface ONLY prior to installation. No messy cleanup or overspray which could affect other machine components
- ❖ Requires a 24VDC power supply connection to the motor cable connector and a standard 4-Wire connection to the Proximity sensor (where applicable)
- ❖ Fully sealed and Powder-Coated tray body for long life and wear-resistance
- ❖ Store-bought replaceable rollers
- ❖ Simply connect the motor and prox sensor (optional), program your cell to turn it two revolutions and stop, ready to use thereafter!

Bushing Alignment  
on 2 or 3 Sides

Prox. Sensor & Bracket  
for Start-Stop feature  
(optional)

Mounting for nearly  
any situation.

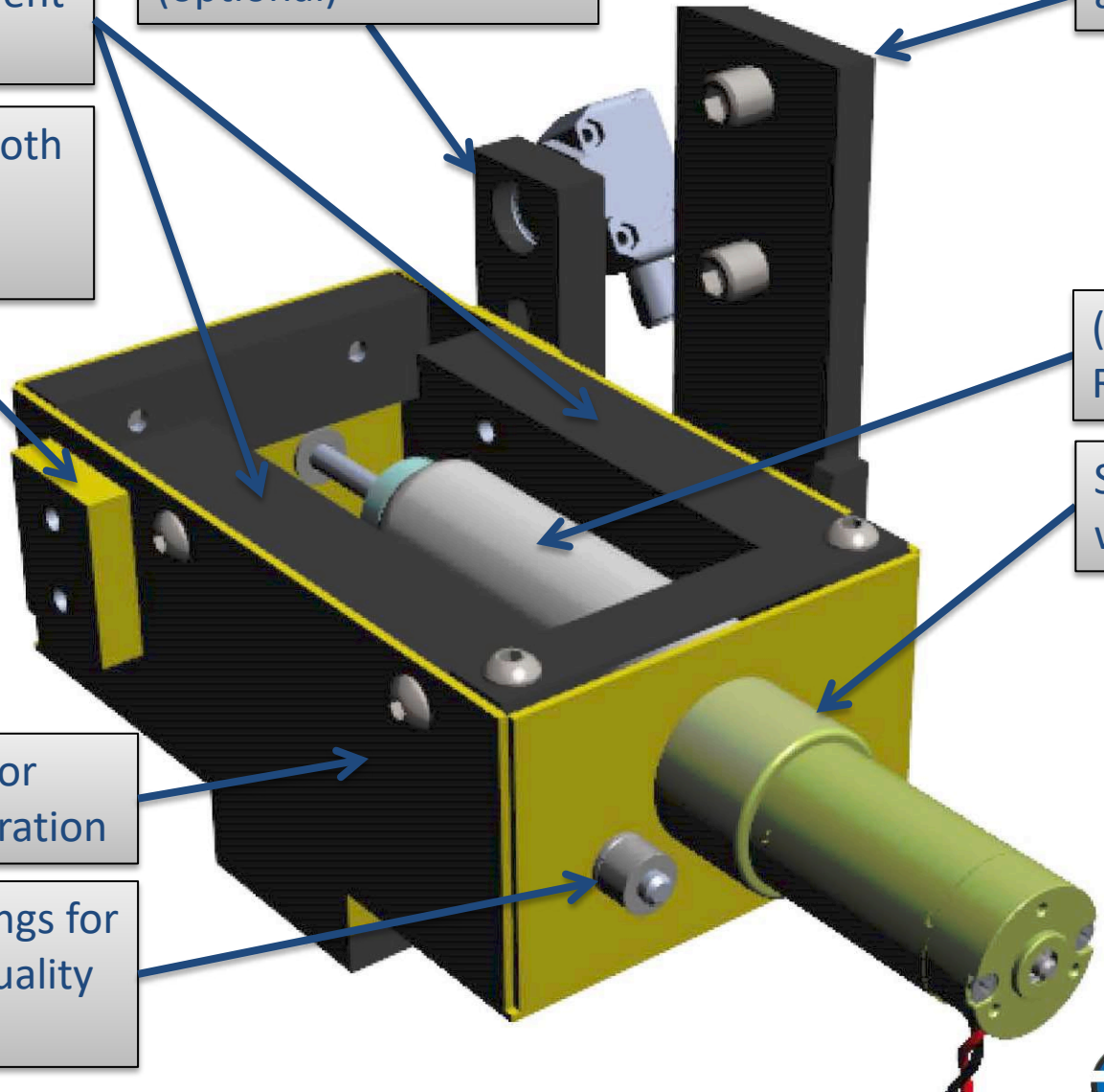
Prox. Pads on Both  
sides for 180°  
Sensor location

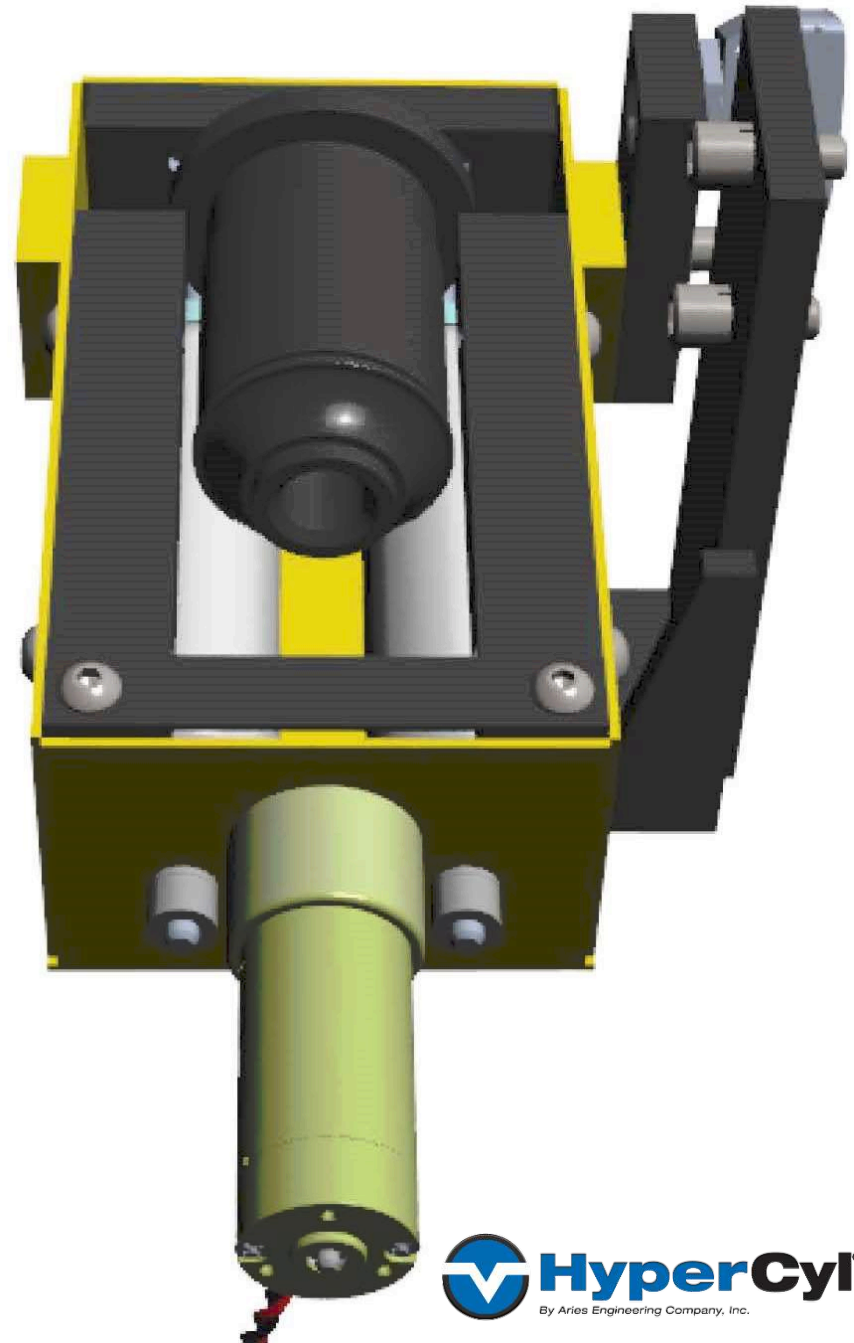
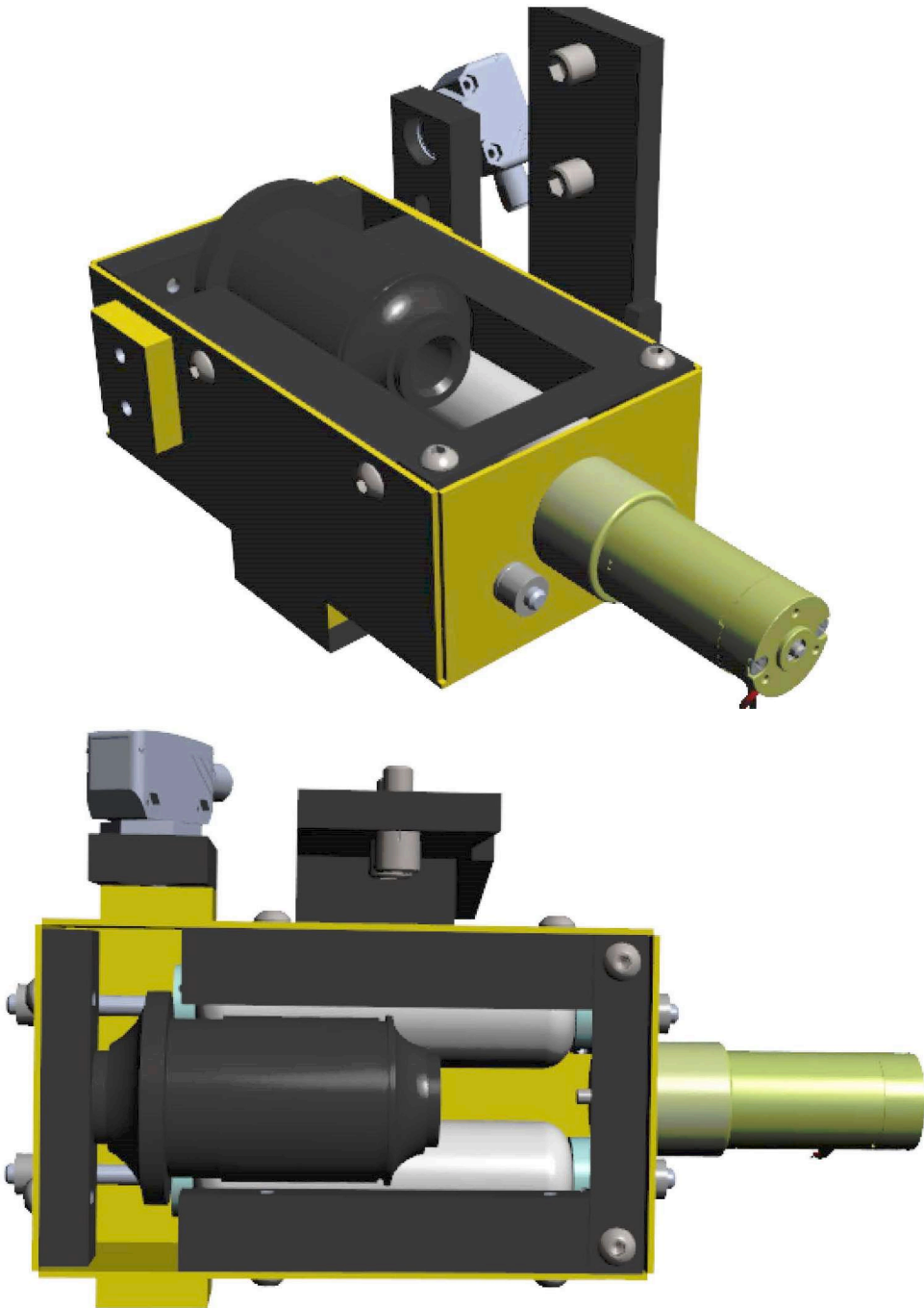
(2) Store-Bought  
Replaceable Rollers

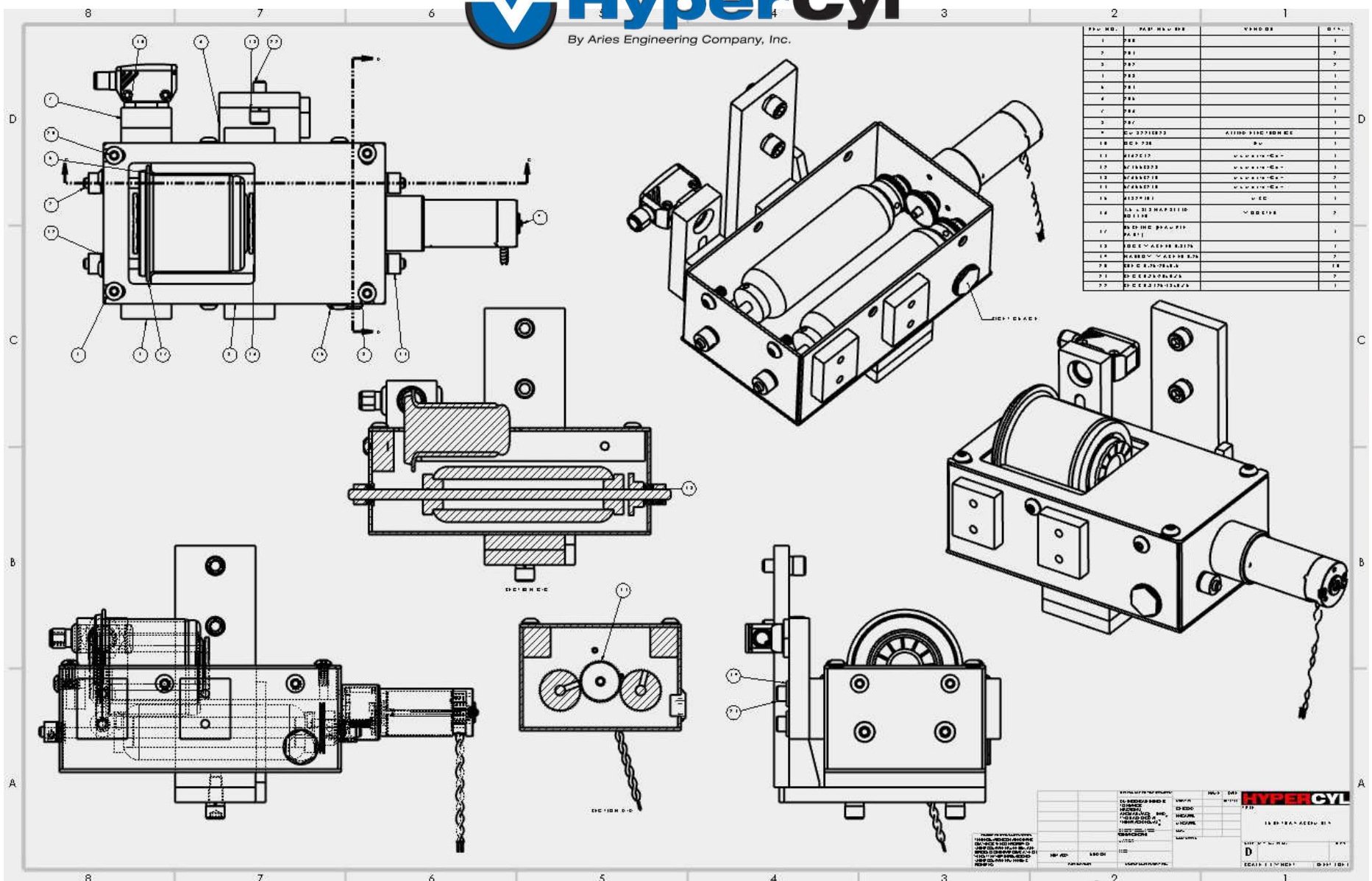
Slow Turn Motor  
w/Gearbox

Seamless Tray for  
Leak-Proof operation

(4) Roller Bearings for  
Long-life and quality  
operation







REV. NO.	REV. DATE	BY	CHKD.
1	08/11		
2	08/11		
3	08/11		
4	08/11		
5	08/11		
6	08/11		
7	08/11		
8	08/11		
9	08/11		
10	08/11		
11	08/11		
12	08/11		
13	08/11		
14	08/11		
15	08/11		
16	08/11		
17	08/11		
18	08/11		
19	08/11		
20	08/11		
21	08/11		
22	08/11		

REV. NO.	REV. DATE	BY	CHKD.
1	08/11		
2	08/11		
3	08/11		
4	08/11		
5	08/11		
6	08/11		
7	08/11		
8	08/11		
9	08/11		
10	08/11		
11	08/11		
12	08/11		
13	08/11		
14	08/11		
15	08/11		
16	08/11		
17	08/11		
18	08/11		
19	08/11		
20	08/11		
21	08/11		
22	08/11		