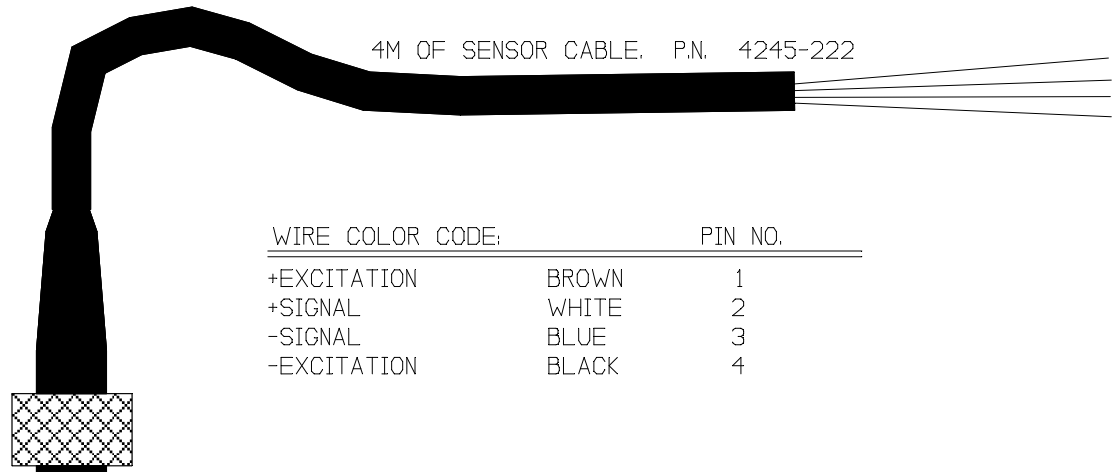


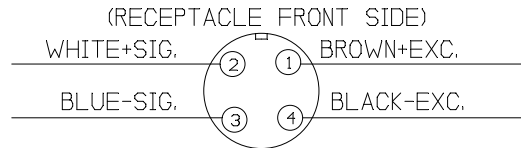
SPECIFICATIONS:

RATED CAPACITY 120,000 POUNDS  
 RATED OUTPUT 2mV/V  
 COMBINED ERROR 0.25% OF F.S.  
 NON-REPEATABILITY 0.05%  
 ZERO BALANCE 1%  
 TEMPERATURE RANGE,COMPENSATED 14 to 104F.  
 TEMPERATURE EFFECT,OUTPUT 0.018%/F.  
 TEMPERATURE EFFECT,ZERO BALANCE 0.005%/F.  
 INPUT IMPEDANCE,(typical) 700 OHMS  
 EXCITATION VOLTAGE (typical) 10VDC or VAC rms  
 EXCITATION VOLTAGE, MAXIMUM 15VDC or VAC rms  
 INSULATION RESISTANCE 5,000 MEG.OHMS @ 50 VDC  
 MAXIMUM LOAD, SAFE 150% F.S.  
 MAXIMUM LOAD, ULTIMATE 200% F.S.  
 NORMAL INSTALLATION TORQUE: 500 FT-LBS.  
 3,500 FT-LBS OR MORE WILL RESULT IN UN-REPAIRABLE DAMAGE.

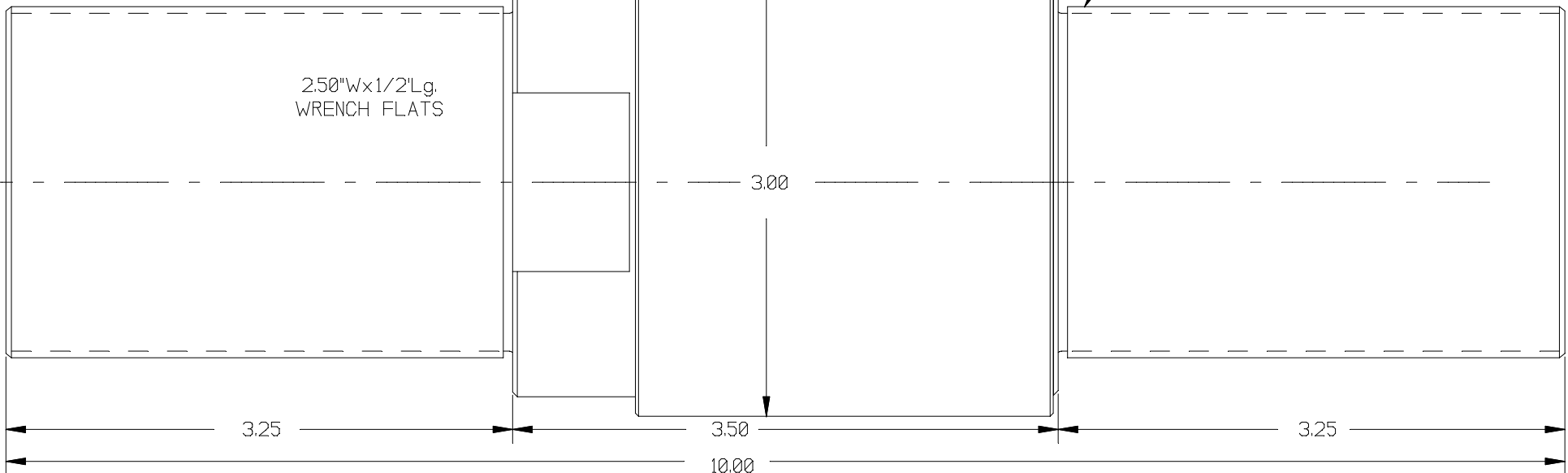
REV	DATE	DESCRIPTION	ECO	SIGN
1	6/28/99	PILOT		BKM
2	12/12/12	O.A.L. WAS 8.75 INCHES, CENTER WAS 2.25 LONG		BKM



WIRE COLOR CODE:	PIN NO.	
+EXCITATION	BROWN	1
+SIGNAL	WHITE	2
-SIGNAL	BLUE	3
-EXCITATION	BLACK	4



TURCK MALE RECEPTACLE FS 4.5/18.25



TOLERANCES UNLESS OTHERWISE SPECIFIED:  
 .XXX=0.005  
 .XX=0.015  
 .X=0.025

SCALE: FULL

FINISH: BRUSHED STAINLESS COVER  
 LOAD CELL MAT'L: ALLOY STEEL



TOLEDO  
 TRANSDUCERS,  
 INC.

Designed By: Mettert	Date: 6/28/99	Title / Description: SS1285 120,000 POUND UNIVERSAL LOAD CELL			Part No. SS1285-120K
Drawn By:	Date:				File Name 11183SP.FCD
Approved By:	Date:	Dwg.Size: A	Dwg. Type: SPEC	Page 1 of 1	Doc. No. 11183